



NASC

Scaffolding Insider

NEWS | FEATURES | COMMERCIAL | HEALTH & SAFETY

DECEMBER 2023

HIGH PRAISE

A look inside three
incredible cathedral projects

TRAILBLAZER

Northern Ireland comes
in from the cold

WINNERS!

Who walked away with
the NASC Awards?

www.nasc.org.uk

SCAFFOLDING & ACCESS EXPO | 2024

Save the Date

 FRIDAY, NOVEMBER 29TH

 Location
ICC BELFAST

- ◆ CONFERENCE
- ◆ EXHIBITION
- ◆ AWARDS
- ◆ GALA DINNER

Featuring
David Meade
International Business Speaker



From the Editor

Hello and welcome to issue two of Scaffolding Insider.

Our cover story this month is the tale of three remarkable scaffolding projects at cathedrals in the UK. The accompanying pictures are incredible and the technical detail is impressive. NASC gave LinkedIn connections a sneak preview of this story and it quickly became one of its most popular posts, such was the fascination with these projects. You can read all about them on pages 8-10.

Later in the issue, we reflect on the fantastic NASC Gala Dinner and Awards, held last month in London. It looked like a truly spectacular night and you can see a few photos from the event and all the Award winners on pages 13-14.

The brilliant Gala Dinner and Awards will be held in Belfast next year – and that’s not all. There are grand plans afoot to create the most important Conference and Exhibition for the scaffolding and access sector, to be held on the same day, in the same location in November next year. ScaffEx24 has just been launched and the plans sound ambitious and exciting – read more on page 12.

It’s Northern Ireland in the spotlight on page 11 too, as we feature the first company from the province to pass the audit and earn NASC membership for over a decade. I spoke to Director of Advanced NI Scaffolding, Robert Andrews, who has masterminded the whole operation. He has wanted NASC membership since he started the company in 2012 and is delighted to finally achieve it. Let’s hope he paves the way for many others.

Speaking of audits, we asked Dennis Braithwaite, Technical Advisor at NASC, to explain the NASC Code of Practice Product Audit and why it is critical to the safe and efficient procurement and use of scaffolding equipment. He does exactly that on page 7.

We have lots of news for you to catch up on (pages 4-6), including the launch of NASC’s new membership charter, which has been updated to reflect a changing industry.

Finally, there will be advertising space available to buy in our third issue, which will come out in January: please email us at marketing@nasc.org.uk as soon as you can if you are interested in buying space so you can advertise to our broad readership, full of decision-makers.

I hope you enjoy the magazine.



Nick Campion
Editor

CONTENTS

From the Editor	3
Industry News	4
Code of Practice Product Audit	7
Feature: Heritage projects	8
Northern Ireland Trailblazer	11
NASC News	12
Feature: NASC Awards	13

Contact details

editor@nasc.org.uk

020 7822 7400

07958 695 778

National Access & Scaffolding Confederation

4th Floor, 12 Bridewell Place, London. EC4V 6AP

www.nasc.org.uk

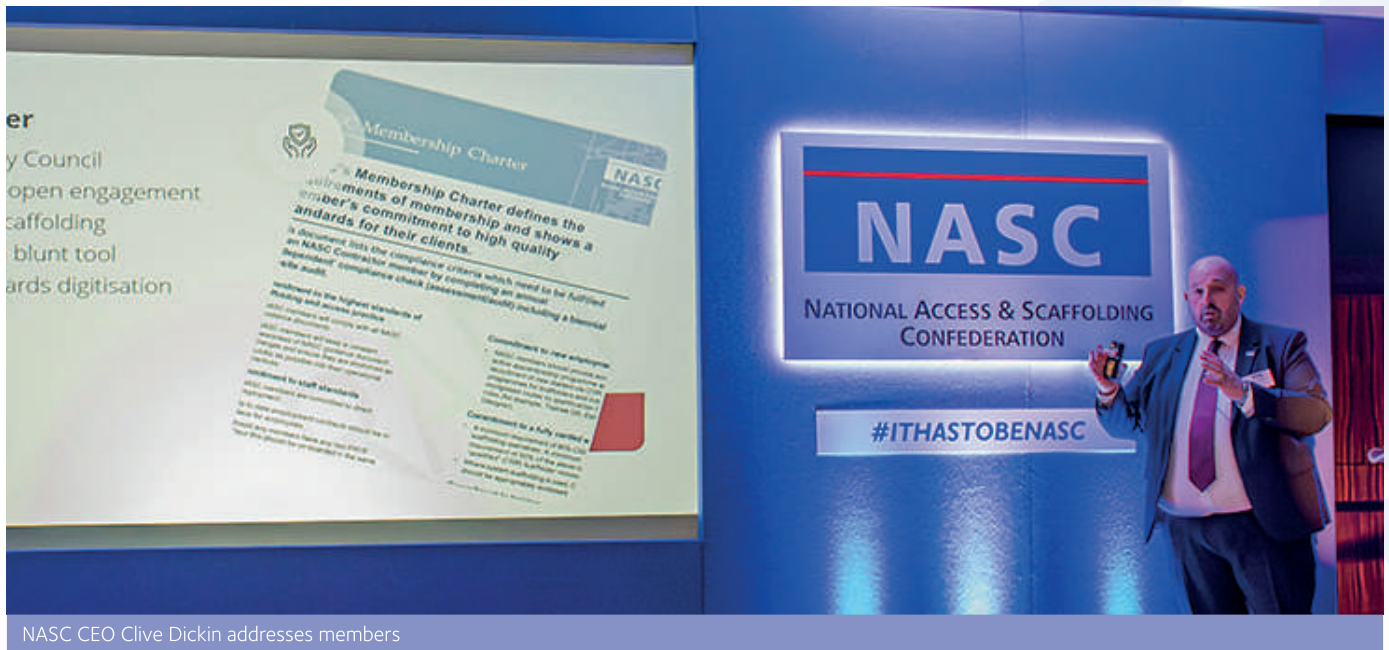
X: NASCscaffolding

YouTube: NASClondon

Scaffolding Insider is published by National Access and Scaffolding Confederation Ltd (NASC). Content does not necessarily represent the views of NASC. NASC is not liable for any inaccuracy or claims of any type from editorial, advertising, or any content within the publication.

Not all images used are representative of the standards NASC upholds and may be supplied by third parties in support of content featured in the publication.

All rights are reserved. Scaffolding Insider is the trademark of NASC, and the NASC logo and brand are registered.



NASC CEO Clive Dickin addresses members

NASC's New Charter Reflects Changes In Sector

National Access and Scaffolding Confederation (NASc) has updated its membership charter to reflect a number of developments in both business and scaffolding practices in the scaffolding industry. The new charter increases inspection of the quality of scaffolding and demands strict adherence to NASc's published guidelines and best practices.

The charter places a renewed emphasis on employment and personnel standards, ensuring that all operatives, regardless of their employment method, receive the same level of support and treatment as those directly employed. This approach promotes flexibility and quality employment for both contractors and operatives, while recognising that the industry has changed in recent years.

While NASc remains a staunch advocate for direct employment, it recognises the diverse employment

arrangements within the industry. To maintain high standards across all methods, the charter mandates that members undergo thorough assessments to ensure that all operatives receive the same level of support and treatment within the confines of their contractual guidelines.

The new charter was approved by Council and at the recent NASc AGM. Jamie McGuire, NASc's Head of Business Development, said: "We are enormously proud of our new charter, which reflects our commitment to excellence and innovation in the scaffolding industry. We believe that these changes will enhance the quality and standards of our members' work, as well as their reputation and customer satisfaction. We hope that our members will embrace the new charter and see it as an opportunity to grow and improve their businesses."

If you would like to discuss membership or how the changes to the charter affect you or your business, email enquiries@nasc.org.uk.

Construction activity slows

The headline S&P Global / CIPS UK Construction Purchasing Managers' Index (PMI) November data suggested a continued lack of new work to replace completed projects. Total new orders decreased for the fourth month running, albeit at the slowest pace since August. Customer hesitancy and greater borrowing costs were often reported as weighing on sales volumes, especially in the housing category.

Concerns about the near-term demand outlook contributed to a renewed decline in staffing numbers during November and a marked reduction in purchasing activity. Input buying has now decreased in five of the past six months, largely reflecting reduced workloads and a lack of new project starts.



A combination of greater price competition among suppliers and falling raw material costs contributed to another decrease in input prices across the construction sector. The overall rate of decline was the steepest since July 2009, with survey respondents reporting falling prices paid for a range of materials, especially steel and timber.

Japanese scaffolders in the UK

NASC hosted a meeting of Japanese dignitaries from Scaffolding and Construction Equipment Association (SCEA), the National Institute of Occupational Safety and Health Japan and the Ministry of Health, Japan. The Japanese

delegation also paid a visit to the London Academy of Sustainable Construction (LASC) CISRS Centre in Waltham Forest, London, learning about the UK's high standards of construction industry training and promoting collaboration in scaffolding practices.



From left to right, Jamie McGuire, Head of Business Development NASC, Clive Dickin CEO NASC, Dr Yasuo Toyosawa Ph.D, President, SCEA, Katsutoshi Ohdo Dr.ENG, Tatsuro Takamatsu Technical Assessment Officer, Dr Naotaka Kikkawa PH.D..

The president of the Japanese Scaffolding Construction Equipment Association (SCEA), Dr. Yasuo Toyosawa, a stalwart in the Japanese scaffolding industry with over 30 years' experience in scaffolding safety, was impressed by the stringent quality and standards required to secure CISRS approval.

Jamie McGuire, Head of Business Development at NASC, commented: "It was a pleasure to support the Japanese delegation and to brief them on the risk reduction and efficiency approach that NASC members achieve. NASC is working closely with SECA and we are aiming to establish a working MOU in the near future."

Migration crackdown will hit scaffolding

The Home Secretary has announced a package of measures to cut net migration to the UK, including an increase in the salary threshold for overseas workers. James Cleverly said that from next spring, the government will increase the earning threshold for overseas workers by nearly 50% from its current position of £26,200 to £38,700. With the construction industry average wage at £28,989, and with 789 visas granted to workers in the industry in '22-'23, it is likely that the impact will be small but not inconsiderable.

To crack down on what is seen as cut-price labour from overseas, the government will end the 20% going rate salary discount for shortage occupations and replace the shortage occupation list with a new immigration salary list. The Migration Advisory Committee will review the new list against the increased salary thresholds in order to reduce the number of occupations on the list. It was only in July this year that a raft of construction-related trades were added to that shortage occupation list after intense lobbying by the industry.



James Cleverly

With changes due in just a few months' time, companies will have to work out the impact it will have on them and how they can mitigate the effects. It leaves little time to recruit and train up new UK-based labour.

National Grid searches for scaffolding contractors

National Grid is looking for civils and major project contractors to deliver the onshore infrastructure to connect 50GW of offshore wind by 2030. The energy distributor has released three frameworks to the market to deliver plans for major power line links and high voltage direct current converter stations to hook up the offshore wind farms.

The core construction framework will be worth £12.8bn over 8 years and covers major works and civils for construction of converter stations and installation of UHV cable. This programme will involve at least 15 HVDC projects, with the scope of some still to be agreed. Find the details on the frameworks here <https://www.find-tender.service.gov.uk/Notice/035469-2023?>



Access Industry Forum raises concerns

Access Industry Forum (AIF), representing the principal work at height trade associations and federations including NASC, has raised concerns over persistently high workplace falls from height statistics and called for urgent action.

The latest HSE statistics reveal that over 5,000 people in Great Britain were injured at work last year due to falls from height and 40 people lost their lives as a result of these incidents. These incidents are legally required to be reported by employers through RIDDOR (Reporting of Injuries, Diseases and Dangerous Occurrences Regulations) but there is substantial under-reporting of non-fatal falls from height, particularly among self-employed workers, who reported only 12% of workplace incidents, leaving a massive 88% unreported.

The impact on the individuals and their families is, of course, the most important factor but it is also notable that these incidents also resulted in up to 992,000 working days lost in Great Britain last year alone, with the cost of non-fatal falls in 2022/23 estimated to be over £770 million.

Research conducted by the AIF highlighted the challenges associated with limited data collection on the circumstances surrounding these accidents and a problematic reporting system. This makes it difficult to pinpoint the underlying causes of falls from height.



The AIF is therefore renewing its call for a simplified and more informative system of reporting that can accurately reflect the root causes of workplace accidents. This approach would enable informed and preventative measures to be implemented, addressing the factors contributing to falls from height incidents.

Alarming rise in work-related ill health

A new Health and Safety Executive (HSE) report has revealed that an incredible 1.8 million workers in Great Britain suffered from work-related ill health in the fiscal year 2022/23.

The annual statistics shed light on a troubling rise in work-related stress, depression, anxiety and injuries. According to the HSE's data, approximately half of cases were attributed to stress, depression or anxiety. This marks a troubling departure from pre-pandemic trends when the rate of self-reported work-related ill health had remained relatively stable.

The impact on productivity is noteworthy, with an estimated 35.2 million working days lost due to self-reported work-related ill health or injury.

Sarah Albon, HSE's Chief Executive, said: "Preventing or tackling work-related stress can provide significant benefits to employees, improving their experience of work and their overall health; and also to employers, including increased productivity, decreased absenteeism, and reduced staff turnover."

The economic consequences are also laid bare in the report, with estimated annual costs associated with workplace injuries and work-related ill health reaching £20.7 billion in 2021/22. The report highlights 135 workers losing their lives in work-related accidents during the 2022/23 period, with an additional 561,000 sustaining self-reported non-fatal injuries.

Read the report here <https://www.hse.gov.uk/statistics/industry/index.htm>



NEWS IN BRIEF

BIG LOSS FOR LAING O'ROURKE

Laing O'Rourke made a pre-tax loss of £288.1m for the year to March 31 2023, despite group accounts showing revenue rising to £3.4bn from £2.9bn. However, a pre-tax profit of £2.7m last year became a loss of £288.1m following contract problems around the world. Group chief financial officer Rowan Baker said: "Together with the whole UK construction sector, we were presented with extremely challenging market conditions during this trading period. Unprecedented inflation impacted margins on a small number of our fixed-price projects in the UK. And while it had no immediate cash impact, provision for an exceptional item on a legacy project in Australia added to our loss."

£16,000 FINE AFTER WORKER'S DEATH

Russell Bowry, 52, from Lower Stondon in Bedfordshire, fell 9.5m (31ft) at the Cardington Hangar Studios near Bedford in March 2018. The rigger was working for ELP Broadcast and Events, who pleaded guilty to breaching The Health and Safety at Work etc Act 1974. As a result of this breach, the company faced legal consequences in the form of a £16,000 fine and an additional financial burden of £2,968.70 in costs. These penalties were imposed at Luton Magistrates' Court on 22 November 2023. The HSE investigation found they had failed to plan and implement a safe system of work, and also failed to implement its own health and safety policy or ensure there was adequate supervision.

SERIOUS BREACH COSTS £3,000

RS Rendering Specialists Limited, a Manchester-based rendering company, has been fined £3,000 following a serious breach of safety regulations that put its workers at risk. The Health and Safety Executive (HSE) inspector observed unsafe scaffolding at a house renovation site, leading to the enforcement action. However, the company chose to ignore a Prohibition Notice, risking its workers' lives. At Manchester Magistrates' Court on 24 November 2023, RS Rendering Specialists Limited pleaded guilty to breaching the Work at Height Regulations 2005 and the Health and Safety at Work, etc. Act 1974.

PRISON JOB

Two big prison jobs took Wates to the top of the contractor league table in November. The Surrey-headquartered firm secured the £300m deal for a 1,700-inmate jail in Leicestershire after communities secretary Michael Gove approved the scheme last month. Wates also picked up a £93m job to construct a houseblock at HMP Hindley in Wigan.

GOVERNMENT CLAMPDOWN

Starting on 1 April 2024, companies seeking government contracts exceeding £5 million must demonstrate prompt invoice payment within an average of 55 days. Failure to meet this criterion will result in exclusion. This updated obligation aligns with the Duty to Report, reflecting the government's commitment to enhancing payment practices.

Safety, performance and peace of mind

Dennis Braithwaite, Technical Advisor at NASC, explains NASC's Code of Practice Product Audit and why it is critical to the safe and efficient procurement and use of scaffolding equipment.

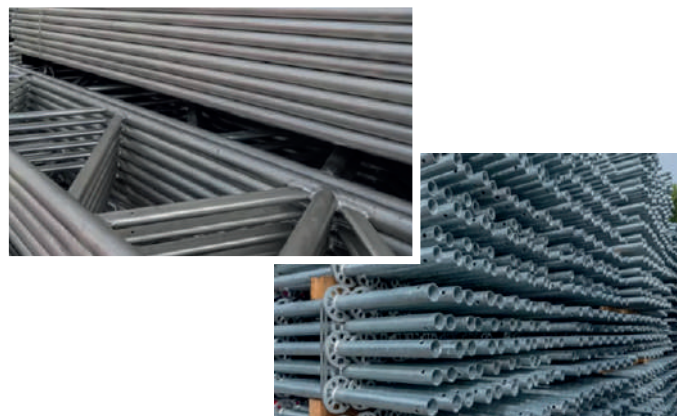
With the ever-increasing demand for scaffolding equipment, worldwide production has expanded greatly over the last few decades. Also, with the costs of labour and raw materials frequently rising and the absolute necessity for contractors to remain competitive, many suppliers of scaffolding equipment have transferred their manufacturing facilities abroad. Unfortunately, the combination of increased demand and a need for economically sourced materials has led to many manufacturers cutting corners with standards and quality.

Whilst there are many responsible manufacturers of scaffolding equipment who employ stringent checks and balances to ensure compliant products, others do not fully understand the need to conform with industry requirements, resulting in large quantities of non-compliant scaffolding equipment being available on the market. Some manufacturers will even issue certificates of conformity without conducting the necessary testing and regular quality assurance checks to ensure that applicable standards are maintained.

This situation potentially leaves scaffold contractors and others who purchase scaffolding equipment at great risk. TG20 provides generally recognised standard configurations for commonly used scaffolds, which are based on calculations utilising equipment conforming to BS and EN standards as well as other recognised specifications. Any substandard materials used to construct TG20 compliant scaffolds could potentially lead to overloading and failure.

In 2008, NASC introduced the Code of Practice (CoP) product audit as a means of enabling supplier and manufacturer members to demonstrate that their key products are compliant with necessary standards, specifications and of appropriate quality.

The rationale behind the audit was to introduce a level of compliance that supplier members should adhere to, with



the audit covering quality systems and procedures, product testing, raw material and components, process control and where applicable, environmental, sustainability, health, safety and ethical requirements. Where appropriate, relevant British, EN & ISO standards are utilised.

Audits are carried out by a third-party consultancy and held at member company UK sites and at manufacturing sites worldwide. Manufacturing sites include factories located in Europe, Scandinavia, the Middle East, Far East, Asia and Africa.

Where a NASC CoP product audit exists, supplier members are required to put their products forward for audit and also submit samples of equipment for testing to ensure that components and materials from which they are manufactured are within the required specification. Samples are examined and tested at independent laboratories. Testing of prefabricated components includes tensile tests, chemical analysis and weld testing. Couplers are tested for slip load, failure load and cruciform stiffness.

The audits are conducted at a minimum frequency of every two years to ensure that standards and material quality are constantly maintained.

Based on the outcome of the audits, NASC publishes a 'Compliant Product List' which includes all equipment that has been found to conform to the applicable specifications. The compliant product list can be found on the NASC website and is updated annually as a minimum. Products included are:

- EN39 Scaffold tube
- EN 10219-1 High tensile scaffold tube
- BS 2482 Timber scaffold boards
- EN74-1 Couplers
- Prefabricated aluminium beams
- Prefabricated structural transom units
- System scaffolds

This process provides purchasers of scaffolding materials with assurances that the key products listed from NASC supplier members are audited to defined specifications. If equipment is sourced from NASC compliant companies, as demonstrated by the product assessment audit reports, then no further action is required. If products are obtained from elsewhere, NASC recommends that purchasers conduct independent checks to ensure that equipment is as advertised and of suitable specification and quality before acceptance.

Inspired scaffolding

Many British cathedrals were erected over the course of several decades in the tenth, eleventh and twelfth centuries and consequently those who maintain them – stained glass renovators, stonemasons, organ restorers, roofers – need to have safe access and egress to their furthest reaches to keep them in first-class condition.

A small number of specialist scaffolders are trusted to provide these solutions and safe work at height environments, and here **Phil Royle** looks at three examples of this truly remarkable specialist work.

Malvern Scaffolding: Worcester Cathedral



Cathedrals are something of a speciality for Malvern Scaffolding, whose reputation for diligence, quality and attention to detail has won them plenty of heritage and conservation work over the years. This includes the current project of Worcester Cathedral, overseen by Acanthus Clews Architects.

On the night of 27 November 2021, Worcester Cathedral took a hit from storm Arwen, sustaining substantial damage, as a pinnacle from the North East corner of the tower was ripped apart, the ancient stone crashing 40m onto the lower North Quire roof below, damaging the 14th-century vaulted ceiling beneath it.

Enter Malvern Scaffolding, first installing a mobile shoring scaffold to support the damaged vaulted ceiling to prevent further damage or, worse, a catastrophic collapse. They then erected a free-standing birdcage scaffold, complete with HAKI stair tower access and a 500kg lifting Niko track and hoist system to lower the ancient, dust damaged organ pipes down for restoration works in phase one. Then the team installed immaculate, hygiene standard scaffolding with composite boards to allow for the cleaning of the organ pipes.

Simultaneously, Malvern provided a HAKI temporary roof covering the damaged areas to facilitate repairs through 2022 whilst keeping the North Quire Aisle free from water ingress.

In Spring 2023 they began the detailed Design with Optima needed to install scaffolding to the top of the tower to lift in the replacement stonework. All this was done with the preservation of this historic monument in mind – for example, using special tie bolts to avoid damage to the sandstone and consulting with the master stonemasons on site to pick suitable tie points for the 55-metre scaffolding structure and 22m HAKI stair tower access.

Malvern Scaffolding MD Steve Fellows said: *“There were numerous instances where unforeseen issues were thrown at us, to do with ecology, structure, access and so on, which the team had to deal with, frequently yo-yoing between the Cathedral’s structural engineer and the scaffold designers to tease out a solution to every problem.*

“To our amazing team at Malvern this is what scaffolding is about – using all the skills they have honed over the years to build a structure that they can take pride in forever.”

At a glance:

- ◊ Total height of 55m (181ft)
- ◊ 22m HAKI stair access
- ◊ 22m high birdcage built with Klawz fittings to increase speed by minimising materials, labour and transportation
- ◊ 3 x 1ton & 1 x 250kg lifting points using Niko track for ease of movement of the stones
- ◊ Specialist 1 ton chain lifting hoists, lifting to a height of 30m to reduce weight on the scaffold whilst maximising the lift capacity
- ◊ 750mm HAKITEC beams used to bridge between 22m high birdcage and the Nave roof. Minimal components using the HAKITEC system reduced tube and fitting materials, increasing the speed of erection, including manual handling. Sections of the bridge were uprated to carry imposed loads of the 750kg carved stones they need to traverse across to the upper section of the tower
- ◊ Tube-lock scaffolding was used, reducing the manual handling, speed of erection and risk of damage to the building; the maximum length of tube used was 4m – saving over 500 sleeve joints.





Blencowe Scaffolding: Winchester Cathedral



At 53,480ft² (almost 5,000m²), the Norman, Gothic gem that is Winchester Cathedral is one of the largest in Europe. It was erected between 1079 and 1532, although its religious roots date back as far as 648. Blencowe have been the Cathedral's partner of choice for some years and were called in when a major, £20.5m roof down restoration was needed on the ancient building in 2015.

Blencowe Scaffolding used Layher's modular system scaffolding and their Keder XL temporary roofing. It was these scaffolds and the weather protection that allowed the army of skilled tradesmen to access the 150-year-old lead work on the roof for re-melting and renovation, and to work on the inner reaches of the Cathedral.

The £1m, 300 tonne scaffold – featuring more than 1,000,000 scaffold components – was built in a series of stepped lifts, to accommodate the roof's 60-degree pitch, with the temporary roof located on a support scaffold structure with ties located after close consultation with the stonemasons.

At a glance:

- Total height of the scaffolding was 140ft
- An average of eight scaffolders on site every day
- A team of 20 scaffolders were onsite to erect and strike the temporary roof
- Total time for roof up: 18 months
- The temporary roof was erected in 2.5 days
- It took two days to strike the roof
- Cost of material value was over £1m
- There were three flights of external system scaffold stairs
- On average, 130 individual steps to reach the top of the external scaffolding.

Presbytery Vault

- Nine scaffolders worked on the scaffold build daily
- 40 tonnes of Layher's Allround system was used internally
- Approximately seven miles of system scaffold used
- 500,000 individual system scaffold components
- The system scaffold took 91 days to erect (including the temporary birdcage, screen to block off and make dust proof)

Great Screen

- 14 metres long, with seven lifts
- Three scaffolders worked on erecting the system each day
- It took two weeks to erect and remove the bridge scaffolding
- Over 2,000 individual scaffold components used.

Using Layher's Allround system scaffold – with its in-built rosette connector system – meant there were no separate fittings and the risk of material falling from height was significantly reduced, which was a major factor for the main contractor and client. And the system's lightweight structure made it faster, safer and less arduous to install on such a large, tall structure – 150ft (46m) at the tower.

“And it drew huge crowds the day the temporary roof was craned into position from its ground level build in four nerve-jangling crane lifts. It even made the TV news.”

The Layher also minimised the amount of ties required, meaning less drilling to the ancient stonework, with ties mainly only to spoiled stones.

Pat Blencowe, MD of Blencowe Scaffolding, said: *“At the time, it was believed the temporary roof was the largest single scaffold structure to be erected on a British cathedral and our operatives were probably a handful of only a few dozen people this close to this roof in the last 900 years – quite the claim to fame. And it drew huge crowds the day the temporary roof was craned into position from its ground level build in four nerve-jangling crane lifts. It even made the TV news.”*

Palmers Scaffolding: St Pauls' Cathedral

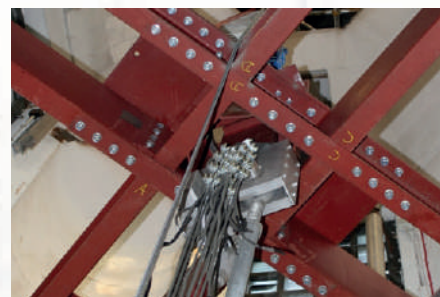
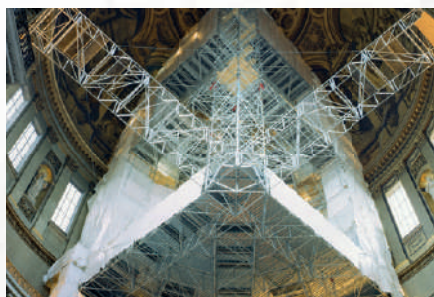
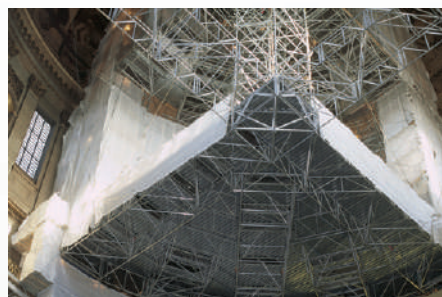


There is no more iconic cathedral than St Paul's Cathedral in London. From 2003 to 2005, Palmers Scaffolding were drafted in to provide highly complex access to the famous dome, providing a suspended rotating special access to the Whispering Gallery, open to the public.

Palmers and RDG Engineering designed and constructed a 30 metre cruciform bridging access system erected at the church floor level with one decked quadrant providing a working platform. The structure was fitted with a bespoke suspension wire lifting system to raise the module to the 30 metre level of the famous Whispering Gallery. Remarkably, the system was also designed to rotate 360 degrees to facilitate restoration works.

Palmers Scaffolding's Ian McFarlane said: "As part of a major internal conservation and refurbishment scheme, a solution was required to allow access for tradesmen to the full height of the cathedral dome.

"The challenge was to ensure no more than a quarter of the dome was obscured at any one time whilst the cathedral remained open to the general public. Due to the sensitive nature of the internal finishes, no intrusive support fixings could be used.



"The challenge was to ensure no more than a quarter of the dome was obscured at any one time whilst the cathedral remained open to the general public."

"Palmers worked in partnership with the RDG Engineering design house to create a fully suspended access deck that covered 90 degrees, with the mobility to rotate a full 360 degrees. Vertical loads were shared between a cruciform head frame positioned above the Golden Gallery, some 85 metres above floor level, and a second cruciform positioned at the Whispering Gallery, 30 metres above floor level.

"The bottom of the scaffold structure was erected at cathedral floor level using a five tonne SWL drum winch placed centrally beneath the dome. The smaller scaffolding sections and frames used to construct the dome itself were winched into position using a 100kg WL Tirfor Winch. Access for conservators was made possible every two metres, enabling contact with all inner dome surfaces. Due to the need to minimise self-weight, the entire structure was constructed with unique modular aluminium lattice beams and aluminium tube and fittings.

"Rotation was achieved with the use of bespoke steerable bogies which ran along steel tracking plates seated on the Whispering Gallery step. A manually operated pulling system was then used to move the structure through the rotations. The pulling system comprised of a ratchet chain pull, secured to the rear of the track with a steel wire stop and to the bogie chassis with a fibre stop. Motorised solutions were reviewed but found to be costly, unreliable and unpredictable. The rotation itself was carried out in three phases. The scaffold was first prepared by withdrawing any protruding scaffolding structures and platforms, rotated through 90 degrees and then reinstated for the next phase of work. Over the duration of the contract, the scaffold segment completed two full rotations."

This access solution was highly innovative, so much so that Ulrike Knox of Knox Mccon Nell Architects remarked: "Palmers showed incredible innovation and determination to deliver a temporary structure of awe inspiring beauty and impeccable practicality."

Do you have a project that you're particularly proud of?

We'd like to hear from you: email us at editor@nasc.org.uk with a summary of the project and maybe it too could feature in Scaffolding Insider.



NORTHERN IRELAND TRAILBLAZER JOINS NASC

Advanced NI Scaffolding becomes first NASC member for more than a decade

On 7 December, Advanced NI Scaffolding became the first NASC member in Northern Ireland for over a decade. Robert Andrews, Director, explained: *"I started the company in 2012 and the goal from day one was always to become a NASC member. I've always believed NASC accreditation is the best a scaffolding company can get, and membership is the optimum way to ensure a scaffolding company continues to meet ever more complex and demanding standards and legislation."*

"As soon as I knew we could fulfil all the criteria NASC demanded, I made the application. Today is the culmination of years of hard work and I'm delighted."

Equally delighted is NASC itself, which has made changes to its membership charter in recent months in order to more accurately reflect the reality of work in today's scaffolding industry. This includes the way in which NASC establishes a company's quality of work, safety and training, which now allows for the use of more sub-contractors – but only if they

are trained and operate to precisely the same high standards as directly-employed staff. With a culture in Northern Ireland of greater use of sub-contractors, this has been a critical change that has allowed high-quality, high-performing companies like Advanced NI to join.

Jamie McGuire, Head of Business Development, comments: *"The changes we have made to the Charter have made membership more accessible and inclusive but without compromising on standards – in fact, standards are more rigorous and wide-reaching than ever. We're delighted to welcome Advanced NI Scaffolding to membership and believe they will be the first of many as our relationship with Northern Ireland blossoms."*

Advanced NI Scaffolding began with just six employees in 2012 and now has over 40. It works in the commercial, industrial and private sectors. Robert commented: *"We've always set out to be the best at what we do, with a focus on attention to detail and health and safety."*

"We make sure we recruit people who buy into this approach and if they don't like it, they don't tend to stay long. NASC membership is a real recognition of the work everyone has put in over the years. Some of these people, in the past, have been told they're stupid and would never get anywhere but now they are without a doubt some of the best in the business. We've helped them, coached them and backed them all the way and they have more than repaid us."

Looking more broadly, Robert adds: *"Scaffolding in Northern Ireland is very different to the rest of the UK. Things are done differently here and in some ways, it's still catching up when it comes to safety and standards. That's why NASC's presence here is so important: it will inspire change and help raise standards."*



SCAFFEX24:

A BRAND NEW EVENT FOR THE SCAFFOLDING & ACCESS SECTOR

NASC has announced a bold and ambitious new event with the goal of making it the go-to event for the whole of the scaffolding and access industry in the UK. ScaffEx24, a pioneering scaffolding and access conference and expo, will take place at the Belfast International Conference Centre on 29 November 2024.

This free to attend conference and exhibition will address the needs of the UK scaffolding and access market, delivering the very latest useable information and best practice in areas such as training, design principles, products and safety. There will be an exhibition where suppliers can showcase their products and services and also opportunities to meet the buyer. The ambition is to provide a creative, innovative, collaborative space where all elements of the industry can come together.

Jamie McGuire, Head of Business Development for NASC, said: *"We really wanted to create something for the whole industry, so whether you're interested in products or services or training or contracts or any number of other things, this will be the place to be. We will be bringing in some wonderful, inspiring and informative speakers to the Conference and it will be free to attend."*



"We have chosen Belfast, as Northern Ireland is an area that is really ready to take off in the access and scaffolding sector, and also it is actually much easier for many people to get to than London, for example. The facilities are wonderful and the hospitality legendary. I'd urge everyone to put this date in their diary now."

This event is expected to attract over 1000 delegates from across the UK and Ireland, and will feature a wide range of activities, including: an exhibition with over 40 industry suppliers and service providers, a conference including professional keynote speakers and thought-provoking panel discussions, and finally the industry-famous NASC gala dinner and awards ceremony.

Renowned motivational business speaker David Meade will address the audience, providing invaluable insights into the industry's future and sparking inspiration among attendees.

Tickets would usually cost £120 for members and £180 for non-members; however for this inaugural event, they will be free. Gala dinner and awards tickets are £205 for members, £290 for non-members and are limited to 750; they will sell out so book early to avoid disappointment.

For those interested in sponsorship opportunities or exhibiting at ScaffEx24, contact enquiries@nasc.org.uk.

ADVERTISE IN

Scaffolding Insider

and reach all the very best scaffold and access company decision-makers in the UK.

We are now taking pre-orders for advertisements in Scaffolding Insider
For more information, contact
email: advertising@nasc.org.uk

NASC PRESENTS NEW WEBINAR PROGRAMME

NASC has devised a new webinar programme aimed at keeping members up to date with the latest developments in the industry. The initial programme is:



- January 17th: Mental Health Webinar: SG38:23 Guidance on mental health wellbeing – Register Now
- January 24th: NASC & CITB present Spotlight on Training Funding Entitlement
- January 31st: Falls from Height: Preventing Falls and Management of Fall Protection Equipment
- February 14th: Heritage Projects: The Passion and the Pitfalls
- February 28th: The Future of Scaffolding: ESG as a Driver of Innovation and Business
- March 13th: Building a Pipeline of Talent: Strategies for Scaffolding Recruitment

Find out the latest information on the webinars, including how to book, by scanning the QR code.



WINNERS!

Access providers, scaffolders and suppliers from across the nation came together on 17 November to celebrate the outstanding people and projects that made the scaffolding and access industry proud during 2023.

Well over 700 guests enjoyed the largest-ever NASC annual Awards and Ball, which featured a glamorous 1920s theme and was held at the Westminster Bridge Park Plaza Hotel. As well as finding out all the winners and runners-up, guests enjoyed live music, dancing, a casino, a disco and the talents of comedian Rob Beckett.

Earlier in the day, the NASC AGM was held, where members gathered to discuss NASC strategy and its future trajectory and received an inspirational address from Amy Williams, gold medal Olympian in skeleton.



NASC Award Winners & Runners-up

Scaffolding Ancillary Service of the Year



WINNER:
Fulcrum Scaffold Safety & Training Ltd
Runner-Up:
Smart Scaffolder

Apprentice of the Year



WINNER:
Jack Kirkcaldy, i-Scaffold Access Solutions Ltd
Runner-Up:
Mark Mileson, Lyndon SGB

Health & Safety Award



WINNER:
Peter Humenny, GKR Scaffolding Ltd
Runner-Up:
Malachi Beasley, LTC Specialist Scaffolding

Innovation of the Year



WINNER:
Jonas Kewazo, Kewazo – Liftbot
Runner-Up:
Benchmark Ltd – Benchmark App

Scaffold Design of the Year



WINNER:
Rise Scaffold Services Ltd – Kings Chapel, Cambridge
Runner-Up:
Enigma Industrial Services Ltd – Taf Fechan

President's Award



WINNER:
Kellyanne Conway – JR Scaffold Services Ltd
Runner-Up:
Phil Wise – GKR Scaffolding Ltd

Project of the Year (Small)



WINNER:
Shield Services Group
– The Crescent Centre, Bristol
Runner-Up:
CWR Scaffolds Ltd – Bradford Live

Project of the Year (Medium)



WINNER:
JDC Scaffolding
– The Queens Tower, Imperial College London
Runner-Up:
D+R Group Plc – Wakehurst Palace

Project of the Year (Large)



WINNER:
Lyndon SGB – Manchester Town Hall
Runner-Up:
GKR Scaffolding Ltd – Portland House, London

Services & Ancillary Products Members



If you're looking for a specialist service to support your scaffolding company, check out NASC's Services & Ancillary Products members below:

360 Degrees Consultancy Ltd
Buxton SK17 6HX
T: 07787 408544
E: karl@360degreesconsultancy.co.uk
www.360degreesconsultancy.co.uk

ADI Scaffold Products Ltd
Brierley Hill DY5 1TX
T: 01384 483657 E: sales@scaffoldfixings.co.uk
www.scaffoldfixings.co.uk

All Aspects Scaffolding Ltd T/A All Aspects Scaffolding Safety Services
Grays RM16 3HU
T: 01375 893590
E: info@allaspectsscaffoldsafety.co.uk
www.allaspectsscaffolding.co.uk

Avontus Software Ltd
Ely CB7 4WH
T: 03303 801 349 E: sales@avontus.co.uk
www.avontus.com

Brady Corporation Ltd T/A Scafftag
Sully CF64 5AB
T: 01446 725300
E: customer.services@scafftag.com
www.scafftag.co.uk

Cactus Security
Herne Bay CT6 9AS
T: 01227 365 000 E: info@cactussecurity.co.uk
www.cactussecurity.co.uk

Citation Ltd
Wilmslow SK9 5AR
T: 0345 844 1111 E: hello@citation.co.uk
www.citation.co.uk

Clarke Health and Safety Consultants Ltd
Liverpool L16 4PN
T: 0151 722 8268 E: markclarke207@btinternet.com
www.clarkehealthandsafety.com

Computer and Design Services Ltd
T/A SMART Scaffolder
Broadstone BH18 8AX
T: 01202 603031 E: sales@smartscaffolder.com
www.smartscaffolder.com

Easy Inspect Ltd
Epsom KT17 2JJ
T: 0203 576 1278 E: info@easy-inspect.co.uk
www.easy-inspect.co.uk

Falconbridge Site Security Ltd
Nottingham NG16 5AZ
T: 01773 776 996 E: office@falconbridge.co.uk
www.falconbridgesecurity.co.uk

Footprint WFM
Belfast BT9 7GQ
T: 02890 767 002 E: cieran.boyd@footprintwfm.com
www.footprintwfm.com

GPS Services
Horley RH6 8JZ
T: 07854 697789 E: info@gps-services.uk
www.gps-services.uk

Height Industries Ltd
Salford M6 8QN
T: 07860 472300 E: enquiries@heightindustries.co.uk
www.heightindustries.com

Hydrajaws Ltd
Tamworth B77 1AG
T: 01675 430 370 E: sales@hydrajaws.co.uk
www.hydrajaws.co.uk

Independent Access Inspections Ltd
Crowborough TN6 2NA
T: 02038760183 E: leanne@iainspectionsgroup.co.uk
iainspectionsgroup.co.uk

iPhorms Ltd
Macclesfield SK11 7HG
T: 01625 464 238 E: nigel@iphorms.com
www.iphorms.com

J Mac Safety Systems Ltd
Stockton-on-Tees TS18 2PJ
T: 01642 563 696 E: sales@jmacsafetysystems.co.uk
www.jmacsafetysystems.co.uk

J S Safety Associates
Welling DA16 2EP
T: 07792271308 E: jsaoffice@gmail.com
www.jsasafetyassociates.com

KEWAZO GmbH
Garching bei München D 85748
T: +49 1577 8497982 E: info@kewazo.com
www.kewazo.com/

Lakeside Industries Ltd T/A Alto Access Products
Redditch B98 7SE
T: 01527 500 577 E: sales@altoaccess.com
www.altoaccess.com

LDS Hire & Sales Ltd T/A G-Deck
Leicester LE2 5NG
T: 0116 251 0352 E: office@gdecking.com
www.gdecking.com

McCarron Coates Ltd
Leeds LS27 0BZ
T: 0113 298 3489 E: luigi@mccarroncoates.com
www.mccarroncoates.com

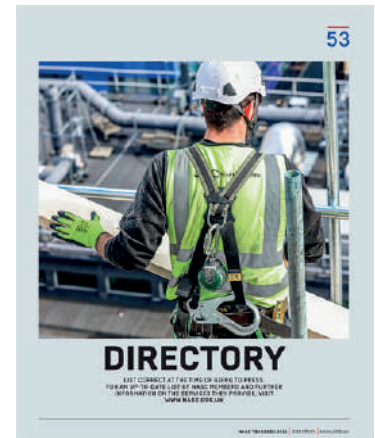
MOR1X Business and Consultancy
London SW14 8HX
T: 07555 800700 E: des@mor1x.co.uk
www.mor1x.co.uk

NexGen Insurance Solutions Ltd
East Malling ME19 6BJ
T: 01732 496 000
E: enquiries@nexgeninsurance.co.uk
https://nexgeninsurance.co.uk/

Nicholas James Health & Safety Solutions Ltd
Dartford DA1 2EN
T: 01322 472995
E: enquiries@nicholasjamessafety.com
www.nicholasjamessafety.com

Portman Finance Group
Northampton NN4 7SL
T: 01604 761 276
E: info@portmanassetfinance.co.uk
www.portmanassetfinance.co.uk

QSCL (Quintessence Safety Consultants Ltd)
Burnley BB12 6AQ
T: 07432 032 443 E: dave@quin-safe.co.uk
www.quin-safe.co.uk



Safety & Access Ltd
Nottingham NG6 8WA
T: 0115 979 4523 E: safe@safetyaccess.co.uk
www.safetyaccess.co.uk

ScaffFloat
Penryn TR10 9LH
T: 01326 702 260 E: sales@scafffloat.co.uk
www.scafffloat.co.uk/

ScaffGap Ltd
Hornchurch RM12 5BB
T: 07930 606665 E: scaffgapltd@gmail.com
www.scaffgap.co.uk

Scaffolding & Access Safety Consultants Ltd (SASC)
Seaview PO34 5JP
T: 01983 613 666 E: tony@sascsafety.co.uk
www.sascsafety.co.uk

Simian Risk Management Ltd
Warrington WA3 6FW
T: 0345 602 2418 E: hello@simian-risk.com
www.simian-risk.com

SJB Safety Services Ltd
New Romney TN28 8SE
T: 07902 011 622 E: sjb.safetyservices@yahoo.com
www.facebook.com/SJBsafetyervices/

SpanSet Ltd
Middlewich CW10 0HX
T: 01606 737494
E: customerservices@spanset.co.uk
www.spanset.co.uk

StrikeSoft Ltd
Ware SG11 1PH
T: 01920 823740 E: sales@strikesoft.co.uk
www.strikesoft.co.uk

Training in Mind
Birmingham B43 6BP
T: 07545 080 011 E: traininginmind@outlook.com
https://traininginmind.info

Vertex Training & Consultancy Ltd
Manchester M25 1PY
T: 07920 557 234
E: hello@vertexscaffoldingsafety.co.uk
www.vertexscaffoldingsafety.co.uk

Winters Safety Services Ltd
Glasgow G68 0GL
T: 01236 728290 E: winters.safety@virgin.net
www.winterssafetyservices.co.uk

Worldwide Scaffold and Access Ltd
King's Lynn PE30 4DJ
T: 01553 674 044 E: tony@wwsa.co.uk
www.wwsa.co.uk

CISRS

CONSTRUCTION INDUSTRY
SCAFFOLDERS RECORD SCHEME

CISRS.ORG.UK | ENQUIRIES@CISRS.ORG.UK | 0300 9991177



GET TO THE TOP WITH CISRS

> THE CISRS SCHEME IS HERE TO SUPPORT YOUR SCAFFOLDING CAREER EVERY STEP OF THE WAY.

> REACH OUT TO US FOR HELP.
ENQUIRES@CISRS.ORG.UK