

Purchasing guidelines for: EN 12810/11 System Scaffold

Issued – November 2018

INTRODUCTION

The purpose of this guidance note is to detail best purchasing practice for EN 12810/11 System Scaffold. If the system is sourced from an NASC compliant company, as demonstrated by the NASC CoP assessment report, then no further action is required, other than a visual inspection of your supplier's certificate of product compliance with the NASC CoP product audit (a list of suppliers and products may be found on the NASC website). If the system is not sourced from an NASC compliant company, then the guidelines below should be followed.

APPROVAL DATA

The approval data is proof that the full system has been tested and analysed to the required European standards, and should consist of:

- A full test report and structural calculations by an external body to EN 12810/12811.
- Examples of external test authorities are, Dibt, TUV, SP, NF, Oxford Brookes, Testconsult, Slender Structures, S-Mech, James Crosbie Associates, Raprig Design.

MATERIAL CERTIFICATION

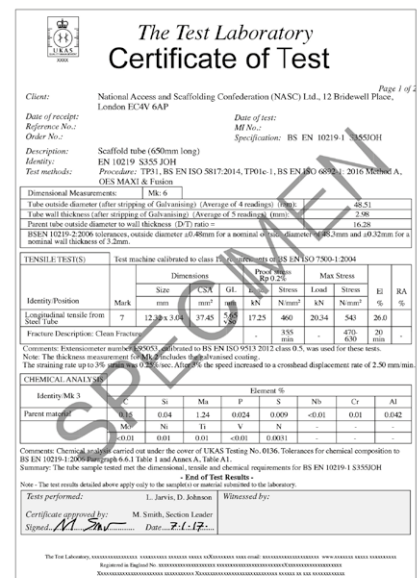
Test data is the criteria to which the product is independently tested as seen on the test report example opposite, & should consist of:

- Annual testing on System Scaffold key components for all suppliers/manufacturers, [standards, ledgers, transoms, steel decks & board bearers] as follows:
- Chemical analysis*
- Mechanical analysis*
- Outside diameter & wall thickness dimension*
- Weld testing to ISO 5817:2014 min level D & should take into account the following:
 - Visual & MPI of 4 welds.
 - 2 x macro weld inspections.
 - Cross weld or bend hardness survey.

Annual tests must be by a UKAS accredited facility or TUV/SGS.

* If a current internationally recognised system approval is in place, [eg Dibt, NF schemes], then chemical, mechanical & dimensional annual testing is not required.

** If a current international welding approval is in place, [Eg, ISO 3834-2, or EN 1090-1/2] then weld testing to ISO 5817:2014 is not required.




MATERIAL CERTIFICATION

You need to check that a material test certificate from the manufacturer/supplier are available for all key system components. Below is an example of a material test certificate, which will detail the following information:

- The British or European specification/standard, eg EN 10219-1 S355 JOH, S460 MH, S275 JRH.
- The specification/standard should be clearly identified on the test certificate.
- The test certificate will detail that it is to the requirements of: EN 10204:2004 section 3.1.

MILL TEST CERTIFICATE																											
Contact No:		EN 10204-3.1										Certificate No: XXXXX															
Buyer: Buyer's name here		STANDARD: EN10219-1										DATE: XXXXXXX															
Description: SCAFFOLDING TUBE																											
ITEM	GRADE	SIZE (mm)	WEIGHT	HEAT NO	Chemical composition (%)							Mechanical property			Technical property												
					C	Si	Mn	P	S	AL	Tensile (N/mm ²)	Yield (N/mm ²)	Elongation %	Impact (J)		Bend											
1	S355JOH	48.3*3.2*6400	743.556	L921182	0.17	0.02	0.16	0.018	0.01	0.029	565	440	37		62		Qualified										
2	S355JOH	48.3*3.2*6400	750.505	L921186	0.19	0.02	1.170	0.016	0.012	0.024	575	456	34.0		60		Qualified										
3	S355JOH	48.3*3.2*4870	249.586	L921188	0.17	0.01	1.140	0.017	0.011	0.026	579	421	30.0		65		Qualified										
4	S355JOH	48.3*3.2*3960	149.632	L921183	0.16	0.02	1.140	0.013	0.007	0.024	564	433	32.5		60		Qualified										
5	S355JOH	48.3*3.2*3050	106.636	L921183	0.16	0.02	1.140	0.013	0.007	0.024	564	433	32.5		60		Qualified										
6	S355JOH	48.3*3.2*2430	91.819	L921183	0.16	0.02	1.140	0.013	0.007	0.024	564	433	32.5		60		Qualified										
7	S355JOH	48.3*3.2*1520	78.89	L921188	0.17	0.01	1.140	0.017	0.011	0.026	579	421	30.0		65		Qualified										
TOTAL			2170.62																								

Issuer: _____ Signed By: _____ DATE: _____

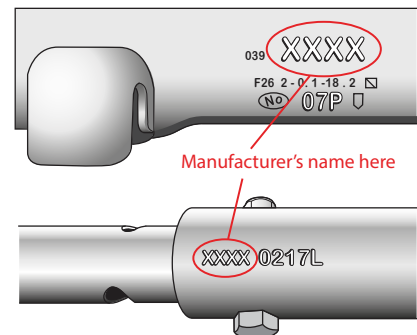


MARKING REQUIREMENTS

You need to check that each system component is permanently marked on the surface with the following information:

- Year of manufacture.
- Registered trade mark, or the manufacturer's name.
- NASC member companies name, [when the original manufacturer is not an NASC member].

Note: Marking location can vary.

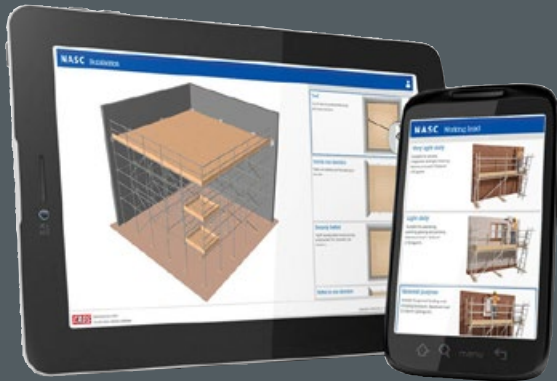


USER GUIDE/PRODUCT MANUAL

Is there a system specific user guide/product manual available which includes the following information:

- Instructions for the sequence of erection/dismantle.
- The layout of each system configuration.
- Instructions for tying, including maximum leg load.
- Statement of limitation, [eg wind pressure/snow loads].
- Specification of items which are not purpose designed.
- Loads imposed on the façade and foundation.
- Indication that damaged components may not be used.
- Instructions for storage, maintenance & repair, if appropriate.
- How to obtain further technical information.

Guidance that makes a difference



- Comprehensive industry guidance, recognised by the Health & Safety Executive (HSE)
- Targets all safety and commercial risks, ensuring your business remains safe and profitable
- Meticulously researched and written by experienced professionals, focused on improving the scaffolding industry
- Aimed at the busy general manager with user friendly, step-by-step advice
- Cutting edge technical guidance on best practice, including ePortal and compliance sheets, that could save you thousands of pounds
- Guidance used by the whole industry – but NASC members receive much of it free and the rest at a huge discount of up to 82%.

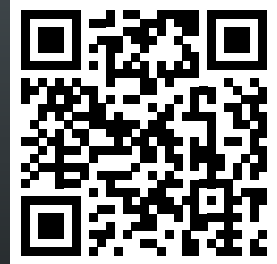
“Setting the Standard for Scaffolding”

NASC

National Access & Scaffolding Confederation
4th Floor, 12 Bridewell Place, London. EC4V 6AP

Tel: +44 (0)20 7822 7400

Email: enquiries@nasc.org.uk



Scan to visit the
NASC Shop

www.nasc.org.uk

Whilst every effort has been made to provide reliable and accurate information, we would welcome any corrections to information provided by the author which may not be entirely accurate, therefore and for this reason, the NASC or indeed the author cannot accept responsibility for any misinformation posted.

© 2024 NASC. All rights reserved. No part of this publication may be reproduced, stored in a retrieval system, or transmitted in any form or by any means, electronic, mechanical, photocopying, recording or otherwise, without the prior permission of the publisher and copyright owner.